

.Line: Two points connected through physical or nonphysical means, not necessarily straight.



This piece shows the bottom of a face using one continuous swirling line and shading.



This piece uses sudden color change in an otherwise repetitive pattern to create implied wavy lines.

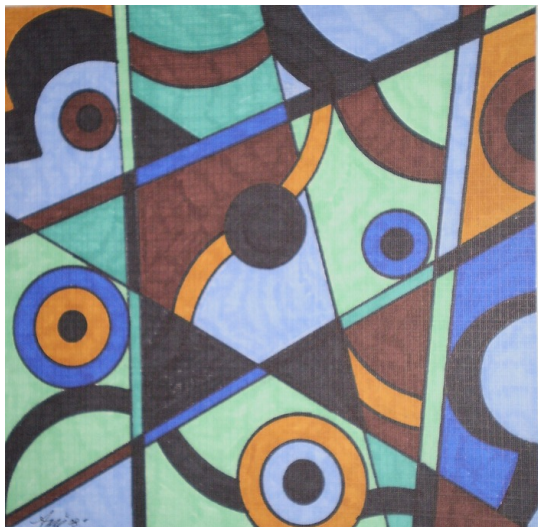


This piece uses colors to create an implied line with the empty space to create a silhouette.

Shape: A two dimensional figure enclosed by boundaries.



In this piece the implied line created by the color is in the recognizable shape of an elephant.

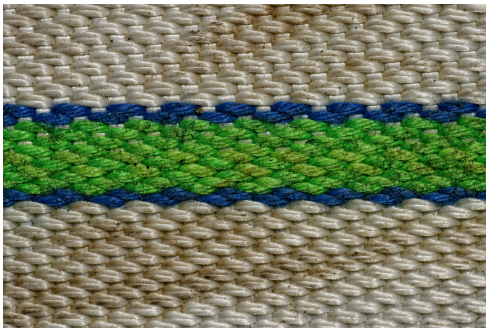


In this piece circles and straight lines throughout the entire piece are used to create circles and triangles of varying size and color.



In this piece seemingly random shapes create an implied set of hands among the the otherwise seeming chaos.

Texture: The physical, implied, or inventive surface of an object.



The texture of the material in this picture is coarse, as one would find it in real life.



The texture of the paper is smooth, however the lines of the paper imply that it is rough and cracked.



The man in this picture is covered in what looks like grass and vegetation, giving him a soft invented texture.

Value: The difference of an image in relation to the grey scale.



The varying light and dark in this piece create a scene of a girl on her knees, without using many hard lines and instead relying on shading.



The guitar in this piece is created by using a high value of white line, which contrasts the pure black background.



This piece is unlike the other two in that it uses a white background instead of a black one, so the contrast in value is made when a dark line is created, rather than a light one.